

HASSAN VALLEY TOWNSHIP

Each township has six files containing six sections in each, and one file containing all 36 sections.

HassanValley01to06.pdf
HassanValley07to12.pdf
HassanValley13to18.pdf
HassanValley19to24.pdf
HassanValley25to30.pdf
HassanValley31to36.pdf
HassanValleyAll36.pdf

The points are listed starting with the point above the SE corner and continuing in a counter-clockwise rotation around the section. This normally begins with the East point, Northeast, then North, but may also include Witness Corners, and/or Meander Corners.

Definitions

Witness Corner: A witness corner “stands in” when the true corner cannot be monumented or occupied because of difficult terrain or obstruction of the corner sight. The witness corner must be on the section line and is usually 5 or 10 chains away from the true corner.

Meander Corner: The intersection of a township, range, or section line and the banks of a navigable stream or meandering body of water.

CERTIFICATE OF LOCATION OF GOVERNMENT CORNER

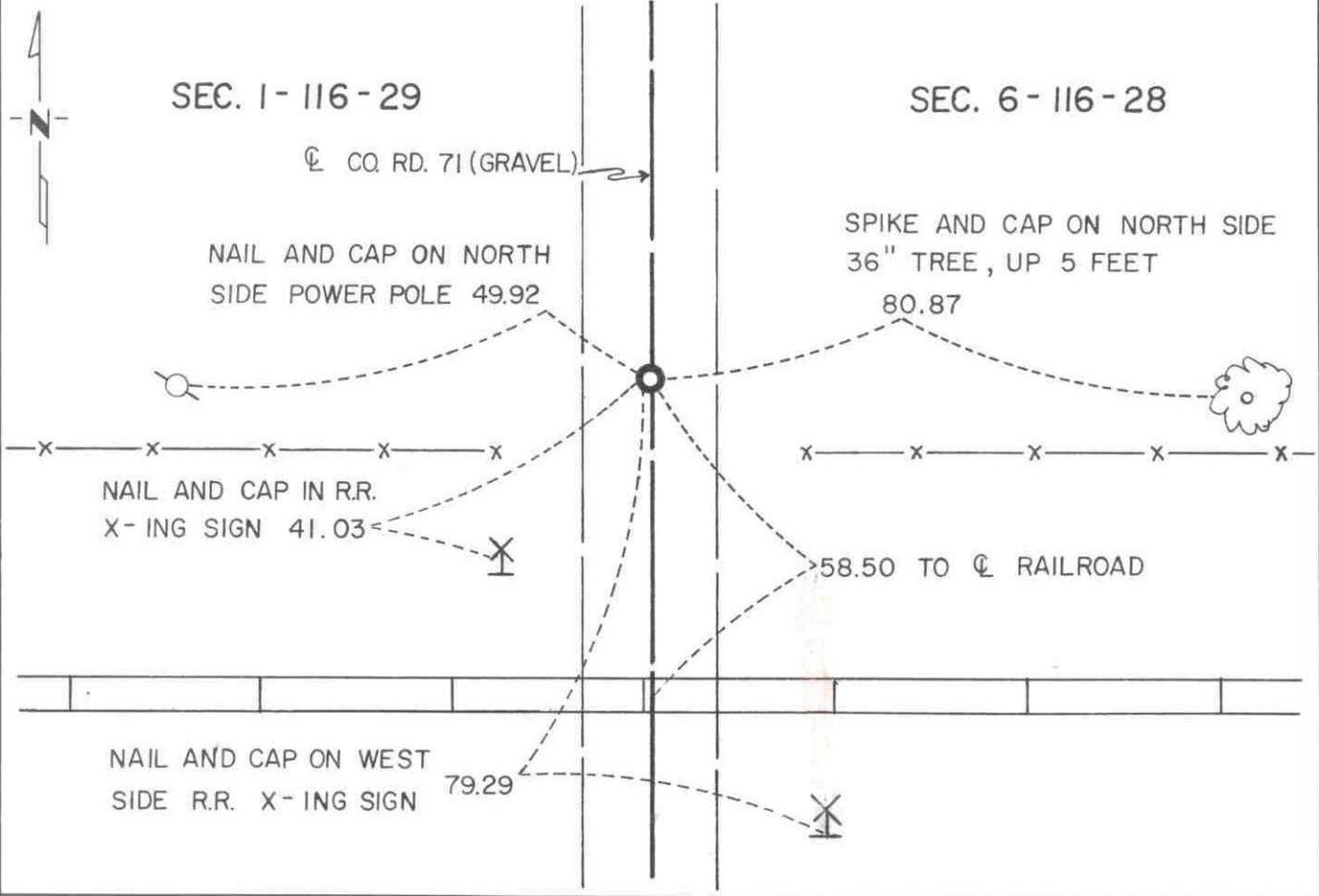
EAST QUARTER Corner of Section 1, Township 116 N, Range 29 W, 5th P.M.

STATE OF MINNESOTA, County of MCLEOD

At the corner location shown on the sketch:

- On FEB. 1991 found a CAST IRON MONUMENT A FEW INCHES BELOW
DATE THE ROAD SURFACE
- left monument as found, lowered monument, removed monument (explain)
- On FEB. 1991 placed a P.K. NAIL AT THE ROAD SURFACE DIRECTLY
DATE OVER THE CAST IRON MONUMENT

SKETCH OF REFERENCE TIES



Statement of evidence relative to this corner location is on back of page.

I hereby certify that this document and the data contained herein was prepared by me or under my direct supervision.

Robert Jones SIGNATURE 7-22-92 DATE

Registration No. 11864
 Land Surveyor, Professional Engineer
 County Surveyor, County Engineer

OFFICE OF THE COUNTY RECORDER
County of McLeod

I hereby certify that this document was filed in the Co. Recorders office at 9 A. .M. on the 29th day of July A.D., 1992

County Recorder Norman Ostlie
By _____, Deputy
DOCUMENT NO. 246731

- 1855 - The original Public Land Survey of the township line was completed by John Ryan. A wood post was set to mark the corner with reference to two bearing trees.
- 1970 - Dickman Knutson, McLeod County Surveyor, set a cast iron monument at the corner. According to his notes, it was located 58.50 feet north of the centerline of the railroad as shown on the railroad map and on the centerline of north/south County Road 71.
- 1982 - Willard Pellinen, McLeod County Surveyor, found that the cast iron monument set by Knutson was gone. A new cast iron monument was set according to Knutson's reference ties.
- 1990 - Willard Pellinen recovered the cast iron monument about 10" below the road surface and set new reference ties.
- 1991 - A Mn/DOT survey crew (Gene East, crew chief) recovered the cast iron monument a few inches below the road surface and placed a P.K. nail over it at the road surface. It was located as shown in Pellinen's notes.

The cast iron monument is accepted as the corner location because it fits long standing occupation lines and it is 0.62 ft. west and 4.43 ft. north of the lost location.

For additional information, contact the Mn/DOT Surveys Section at Willmar, Mn 56201.

CERTIFICATE OF LOCATION OF GOVERNMENT CORNER

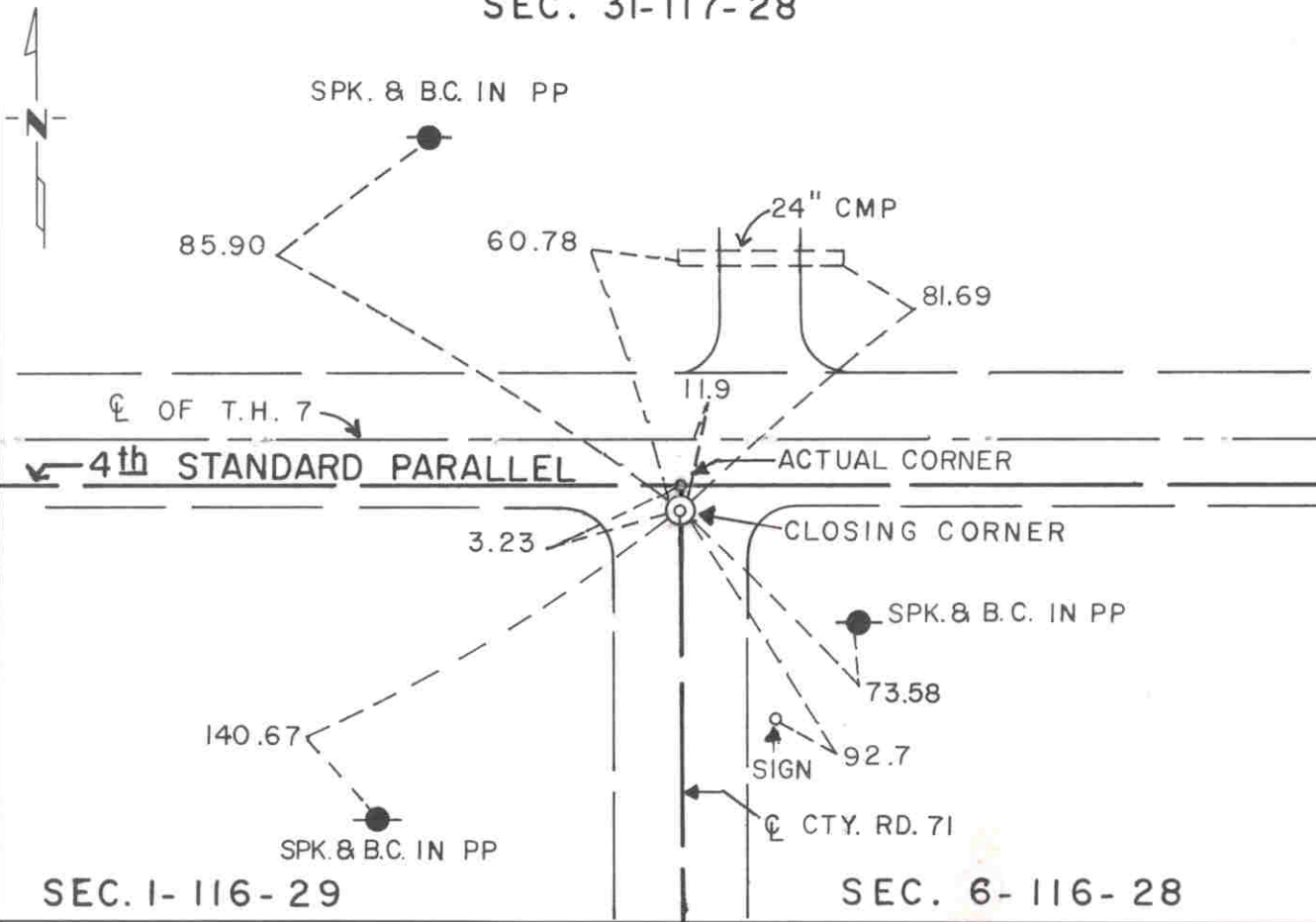
CLOSING CORNER TO
 THE NORTHEAST Corner of Section 1, Township 116 N, Range 29 W, 5th P.M.

STATE OF MINNESOTA, County of MCLEOD

At the corner location shown on the sketch:

- On FEB. 1991 found a RAILROAD SPIKE AT THE ROAD SURFACE
DATE
- left monument as found, lowered monument, removed monument (explain)
- On _____ placed a _____
DATE

SKETCH OF REFERENCE TIES SEC. 31-117-28



Statement of evidence relative to this corner location is on back of page.

I hereby certify that this document and the data contained herein was prepared by me or under my direct supervision.

Robert Jones
SIGNATURE

7-22-92
DATE

Registration No. 11864

- Land Surveyor, Professional Engineer
- County Surveyor, County Engineer

OFFICE OF THE COUNTY RECORDER

County of McLeod

I hereby certify that this document was filed in the Co. Recorders office at 9 A. .M. on the 29th day of July A.D., 1992

County Recorder Carmen Estlie

By _____, Deputy

DOCUMENT NO. 246730

- 1855 - The original Public Land Survey of the township line was completed by John Ryan. A wood post was set to mark the corner with reference to two bearing trees.
- 1937 - The Minnesota Highway Department right of way map shows the corner to be 11.9 feet south of T.H. 7 P.O.T. 306+19.2. This appears to have been about 5 feet north of the centerline of the existing east/west road and about in line with the centerline of a road to the south.
- 1938 - All evidence of this corner was probably destroyed when T.H. 7 was graded.
- 1968 - Dickman Knutson, McLeod County Surveyor, found a spike and disc 11.9 feet south of the centerline of T.H. 7 on the centerline of County Road 71 to the south. He set reference ties to the spike.
- 1979 - Dickman Knutson set a railroad spike using the old reference ties.
- 1982 - Willard Pellinen recovered the railroad spike.
- 1991 - A Mn/DOT survey crew (Gene East, crew chief) found the railroad spike at the road surface. It is located 11.64 feet south of T.H. 7 P.O.T. 306+19.24 at the centerline of County Road 71 to the south.

The railroad spike is accepted as the location of the closing corner because it fits the location shown on the highway right of way map. The actual location of the northeast corner of the section is 3.23 feet north of the closing corner on the Fourth Standard Parallel.

For additional information, contact the Mn/DOT Surveys Section at Willmar, Mn 56201.

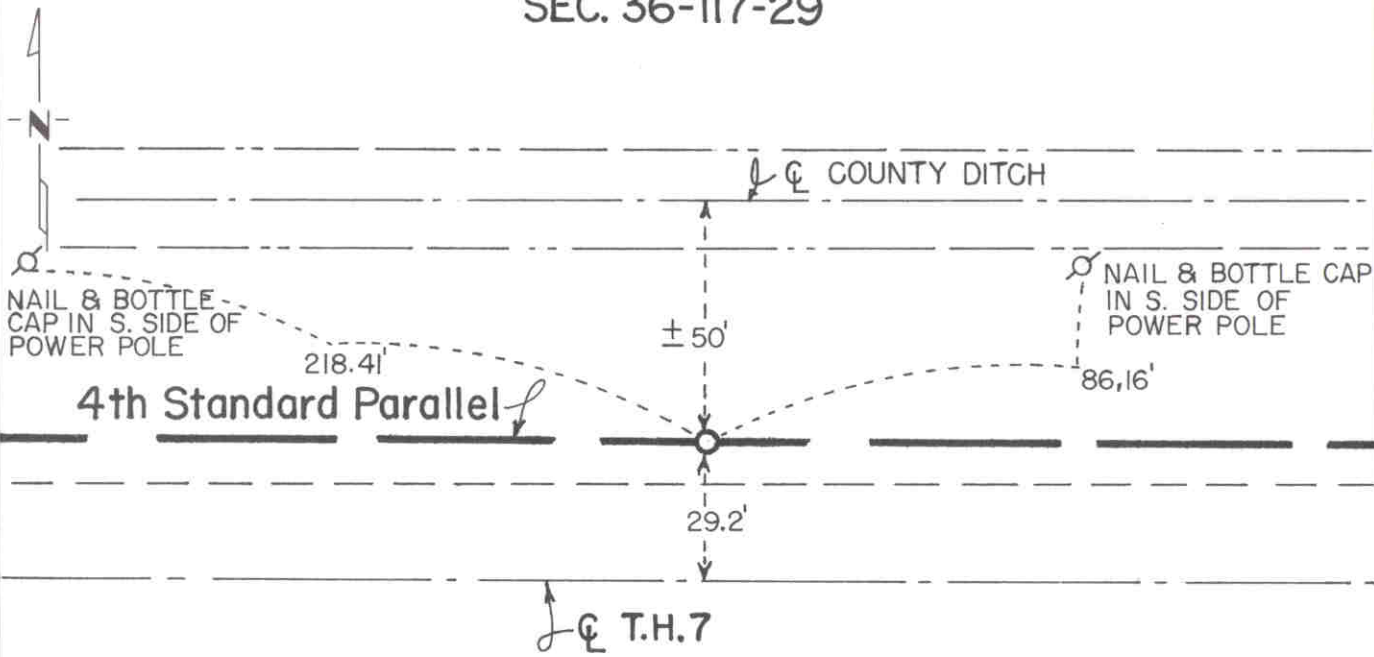
CERTIFICATE OF LOCATION OF GOVERNMENT CORNER

NORTH QUARTER Corner of Section 1, Township 116 N, Range 29 W, 5th P.M.
 STATE OF MINNESOTA, County of MCLEOD

At the corner location shown on the sketch:

- On FEB. 1991 found a CAST IRON MONUMENT ABOUT 6" BELOW THE SURFACE OF THE SHOULDER SLOPE
- left monument as found, lowered monument, removed monument (explain)
- On _____ placed a _____

SKETCH OF REFERENCE TIES SEC. 36-117-29



NOTE: THE MONUMENT IS 0.22 FT. NORTH OF THE STANDARD PARALLEL

SEC. 1-116-29

Statement of evidence relative to this corner location is on back of page.

I hereby certify that this document and the data contained herein was prepared by me or under my direct supervision.

Robert Gans 7-24-92
 SIGNATURE DATE
 Registration No. 11864
 Land Surveyor, Professional Engineer
 County Surveyor, County Engineer

OFFICE OF THE COUNTY RECORDER
 County of McLeod

I hereby certify that this document was filed in the Co. Recorders office at 9 A. .M. on the 29th day of July A.D., 1992
 County Recorder Carmen Ostlie
 By _____, Deputy
 DOCUMENT NO. 246732

- 1855 - The original Public Land Survey was completed by A. H. Runyon. The north quarter corners of the sections lying adjacent to and immediately south of a Standard Parallel were not set in the original survey. The acreages shown on the original plat for the fractional quarter sections adjacent to the Standard Parallel indicate that the quarter corner should be located midway between the section corners. This method of establishing the quarter corner is in paragraph 205 on page 212 of the Manual of Surveying Instructions 1947, published by the Department of Interior, Bureau of Land Management.
- 1937 - The Minnesota Highway Department right of way map for T.H. 7 depicts the corner to be about 28 feet (scaled distance) north of T.H. 7 P.O.T. 279+37 (scaled distance) at or near the centerline of the existing east/west road.
- 1938 - All evidence of the corner was probably destroyed when T.H. 7 was graded.
- 1971 - Dickman Knutson, McLeod County Surveyor, set a cast iron monument at the lost location between the section corners and on the Fourth Standard Parallel. His notes show it to be 29.10 feet north of the centerline of T.H. 7.
- 1990 - Willard Pellinen, McLeod County Surveyor, found the cast iron monument and set new reference ties.
- 1991 - A Mn/DOT survey crew (Gene East, crew chief) found the cast iron monument about 11" below the road surface. It is located 29.23 feet north of T.H. 7 P.O.T. 279+45.87 and 0.22 feet north of the Fourth Standard Parallel.

A point 0.22 feet south of the cast iron monument on the Fourth Standard Parallel is accepted as the corner location because it substantially fits the highway right of way map location and it is only 0.18 feet east of being midway between the section corners.

For additional information, contact the Mn/DOT Surveys Section at Willmar, Mn 56201.

CERTIFICATE OF LOCATION OF GOVERNMENT CORNER

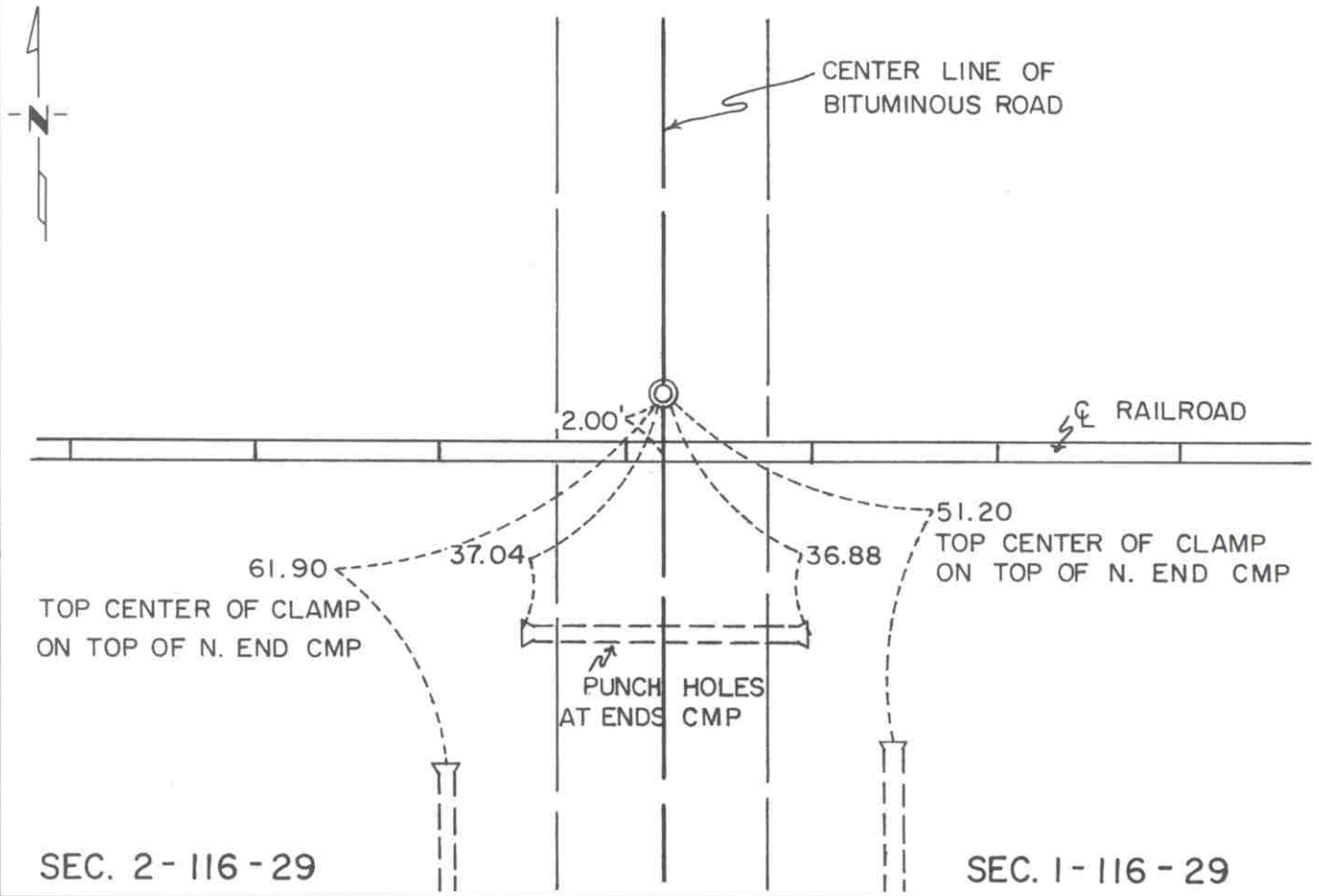
EAST QUARTER Corner of Section 2, Township 116 N, Range 29 W, 5th P.M.

STATE OF MINNESOTA, County of MCLEOD

At the corner location shown on the sketch:

- On FEB. 1991 found a ALL OF THE REFERENCE TIES SET IN 1978
DATE
- left monument as found, lowered monument, removed monument (explain)
- On FEB. 1991 placed a P.K. NAIL AT THE ROAD SURFACE USING THE REFERENCE TIES.
DATE

SKETCH OF REFERENCE TIES



Statement of evidence relative to this corner location is on back of page.

I hereby certify that this document and the data contained herein was prepared by me or under my direct supervision.

Robert Gaus 7-22-92
SIGNATURE DATE

Registration No. 11864

- Land Surveyor, Professional Engineer
- County Surveyor, County Engineer

OFFICE OF THE COUNTY RECORDER
County of McLeod

I hereby certify that this document was filed in the Co. Recorders office at 9 A. .M. on the 29th day of July A.D., 1992

County Recorder Barbara Ostlie
By _____, Deputy

DOCUMENT NO. 246734

- 1855 - The original Public Land Survey was completed by A. H. Runyon. A wood post was set to mark the corner with reference to two bearing trees.
- 1977 - Dickman Knutson, McLeod County Surveyor, set a railroad spike at the centerline of a north/south road and 2 feet north of the centerline of the railroad. The railroad right of way map shows that the corner was 2 feet north of the centerline.
- 1978 - Dickman Knutson recovered the railroad spike and set additional reference ties.
- 1991 - A Mn/DOT survey crew (Gene East, crew chief) recovered the reference ties and set a P.K. nail at the surface according to the ties.

The P.K. nail is accepted as the corner location because it fits the railroad right of way map location and it is 1.27 feet west and 1.57 feet south of the lost location.

For additional information, contact the Mn/DOT Surveys Section at Willmar, Mn 56201.

CERTIFICATE OF LOCATION OF GOVERNMENT CORNER

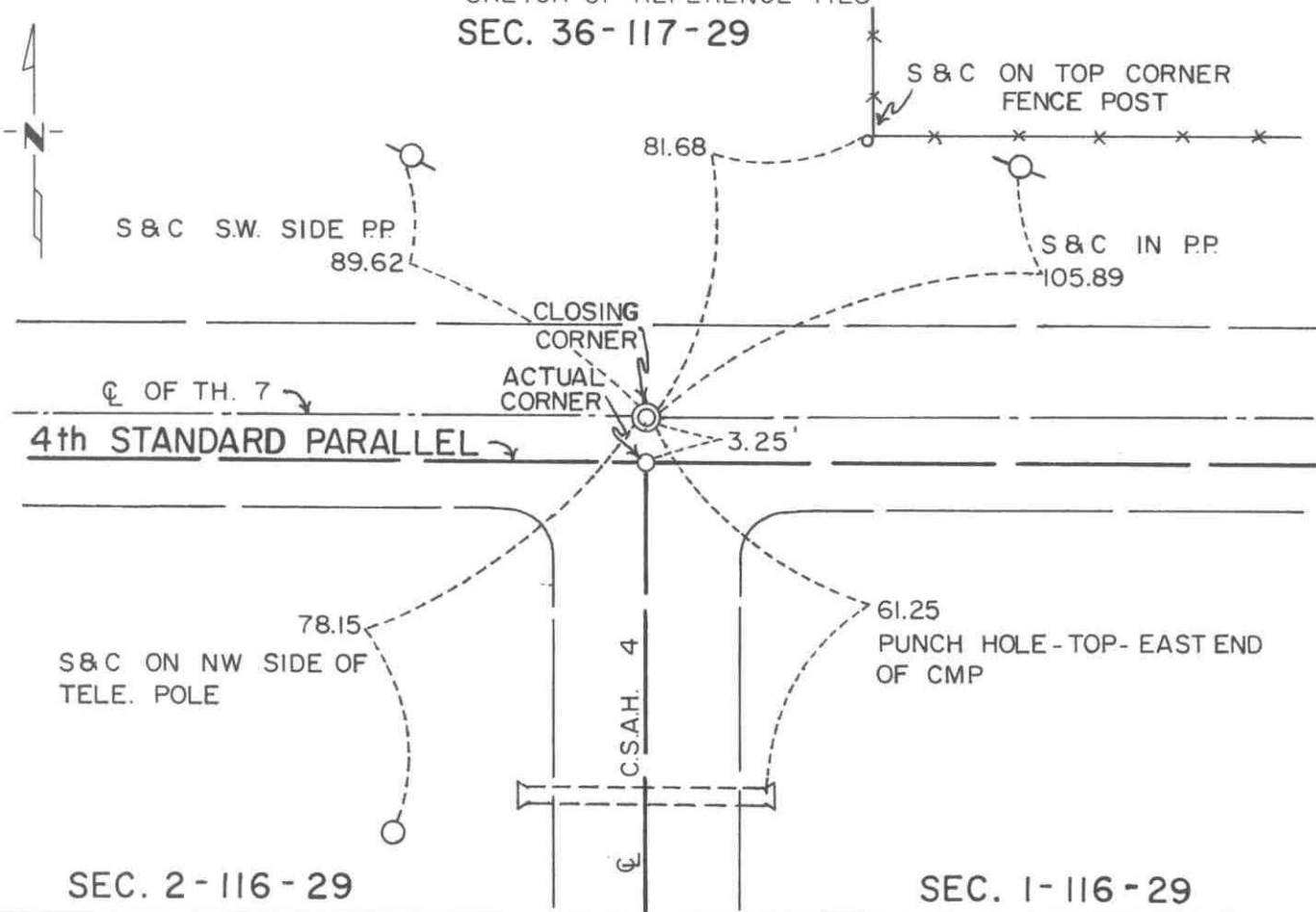
NORTHEAST Corner of Section 2, Township 116 N, Range 29 W, 5th P.M.

STATE OF MINNESOTA, County of MCLEOD

At the corner location shown on the sketch:

- On FEB. 1991 found a NAIL AND DISC AT THE ROAD SURFACE
DATE
- left monument as found, lowered monument, removed monument (explain)
- On _____ placed a _____
DATE

SKETCH OF REFERENCE TIES SEC. 36-117-29



Statement of evidence relative to this corner location is on back of page.

I hereby certify that this document and the data contained herein was prepared by me or under my direct supervision.

Robert Gans SIGNATURE 7-22-92 DATE

Registration No. 11864
 Land Surveyor, Professional Engineer
 County Surveyor, County Engineer

OFFICE OF THE COUNTY RECORDER
County of McLeod

I hereby certify that this document was filed in the Co. Recorders office at 9 A. .M. on the 29th day of July A.D., 1992

County Recorder Thermon Ostlie
By _____, Deputy
DOCUMENT NO. 246733

- 1855 - The original Public Land Survey was completed by A. H. Runyon. A wood post was set to mark the corner with reference to two bearing trees.
- 1937 - The Minnesota Highway Department right of way map shows the corner to be at T.H. 7 P.O.T. 252+74.1. It was located about 2 feet north of the centerline of the existing east/west road and in line with the centerline of a road to the south.
- 1938 - All evidence of this corner was probably destroyed when T.H. 7 was graded.
- 1979 - Willard Pellinen, McLeod County Surveyor, set a nail and disc to mark the corner from old reference ties. It was located at the centerline of T.H. 7 east/west and the centerline of C.S.A.H. 4 to the south.
- 1982 - Willard Pellinen recovered the nail and disc when he traversed around Section 1. His survey showed that this location was actually 3.25 feet north of the Fourth Standard Parallel, which would make it a closing corner.
- 1991 - A Mn/DOT survey crew (Gene East, crew chief) found the nail and disc at the road surface. It is located 0.27 feet north of T.H. 7 P.O.T. 252+72.89.

The found nail and disc is accepted as the location of the closing corner because it fits long standing occupation lines and closely fits the position shown on the right of way map. The actual location of the northeast corner of the section is 3.02 feet south of the closing corner on the Fourth Standard Parallel.

For additional information, contact the Mn/DOT Surveys Section at Willmar, Mn 56201.

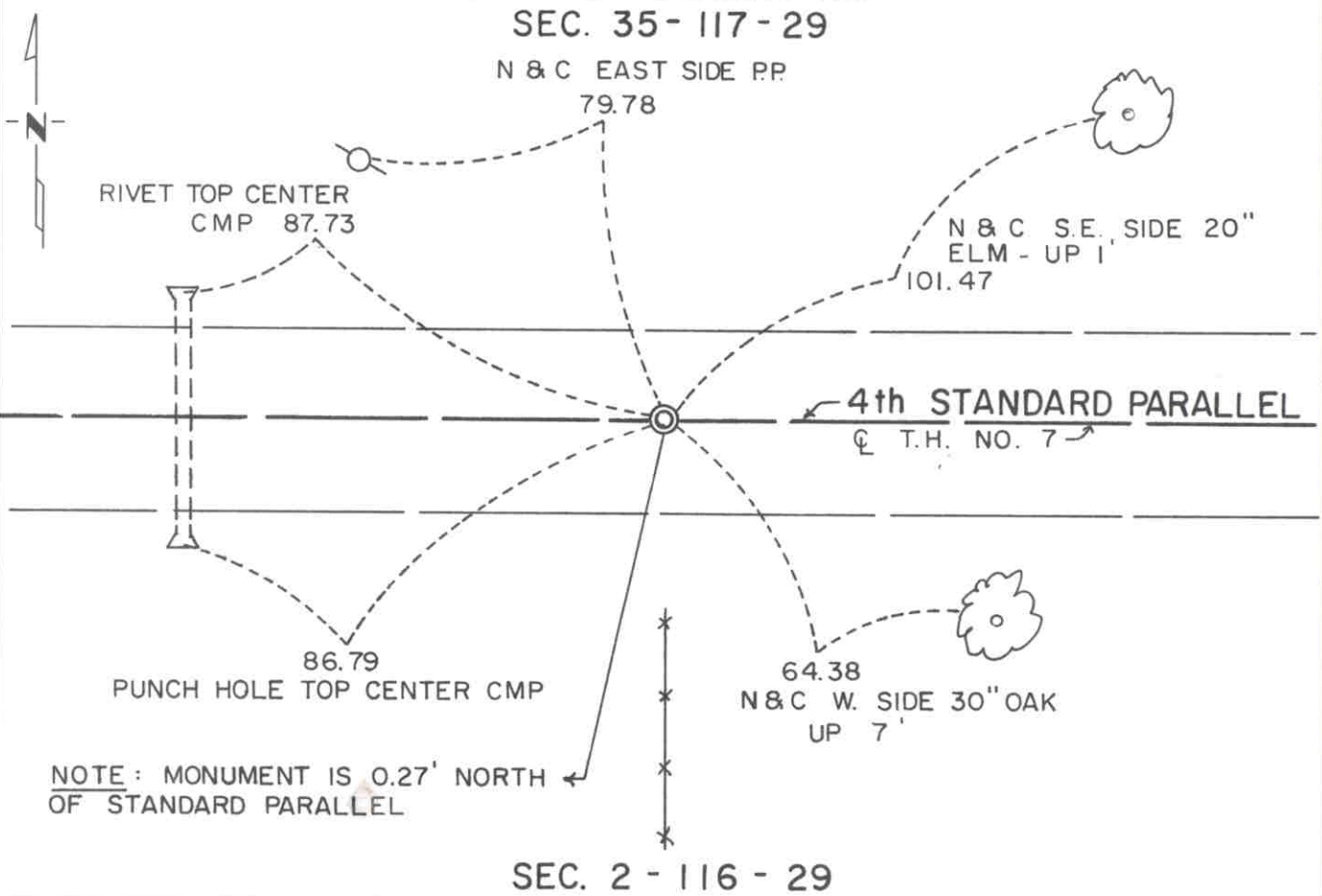
CERTIFICATE OF LOCATION OF GOVERNMENT CORNER

NORTH QUARTER Corner of Section 2, Township 116 N, Range 29 W, 5th P.M.
STATE OF MINNESOTA, County of MCLEOD

At the corner location shown on the sketch:

- On FEB. 1991 found a P.K. NAIL AT THE ROAD SURFACE
DATE
- left monument as found, lowered monument, removed monument (explain)
- On _____ placed a _____
DATE

SKETCH OF REFERENCE TIES SEC. 35 - 117 - 29



Statement of evidence relative to this corner location is on back of page.

I hereby certify that this document and the data contained herein was prepared by me or under my direct supervision.

Robert Jones
SIGNATURE
7-22-92
DATE

Registration No. 11864

Land Surveyor, Professional Engineer
 County Surveyor, County Engineer

OFFICE OF THE COUNTY RECORDER
County of McLeod

I hereby certify that this document was filed in the Co. Recorders office at 9 A. .M. on the 29th day of July A.D., 1992

County Recorder Armen Ostlie
By _____, Deputy

DOCUMENT NO. 246735

- 1855 - The original Public Land Survey was completed by A. H. Runyon. The north quarter corners of the sections adjacent to and immediately south of a Standard Parallel were not set in the original survey. The acreages shown on the original plat for the fractional quarter sections adjacent to the Standard Parallel indicate that the quarter corner should be located midway between the section corners. This method of establishing the quarter corner is in paragraph 205 on page 212 of the Manual of Surveying Instructions 1947, published by the Department of Interior, Bureau of Land Management.
- 1937 - The Minnesota Highway Department right of way map shows the corner at T.H. 7 P.O.T. 226+24.0. It was located about 4 feet north of the centerline of the existing east/west road and in line with a fence line to the south.
- 1938 - All evidence of the corner was probably destroyed when T.H. 7 was graded.
- 1964 - Roy Hansen, surveyor, found a spike at the centerline of T.H. 7 in line with a fence to the south.
- 1968 - Dickman Knutson, McLeod County Surveyor, set a temporary corner at the same location as Hansen used in 1964.
- 1970 - Dickman Knutson set a railroad spike to mark the corner. The corner was referenced out. It was located at the centerline of T.H. 7 and in line with a fence line to the south.
- 1990 - Willard Pellinen, McLeod County Surveyor, recovered the railroad spike and three reference ties. He set a P.K. nail over the railroad spike at the highway surface. Additional reference ties were set.
- 1991 - A Mn/DOT survey crew (Gene East, crew chief) recovered the P.K. nail at the highway surface at P.O.T. 226+23.8. It is located 0.27 feet north of the Fourth Standard Parallel.

A point 0.27 feet south of the P.K. nail on the Fourth Standard Parallel is accepted as the corner location because it is only 2.32 feet west of being midway between section corners, it very closely fits the highway right of way map location, and it fits long standing occupation lines; that is, the centerline of T.H. 7 and a field division to the south.

For additional information, contact the Mn/DOT Surveys Section at Willmar, Mn 56201.

CERTIFICATE OF LOCATION OF GOVERNMENT CORNER

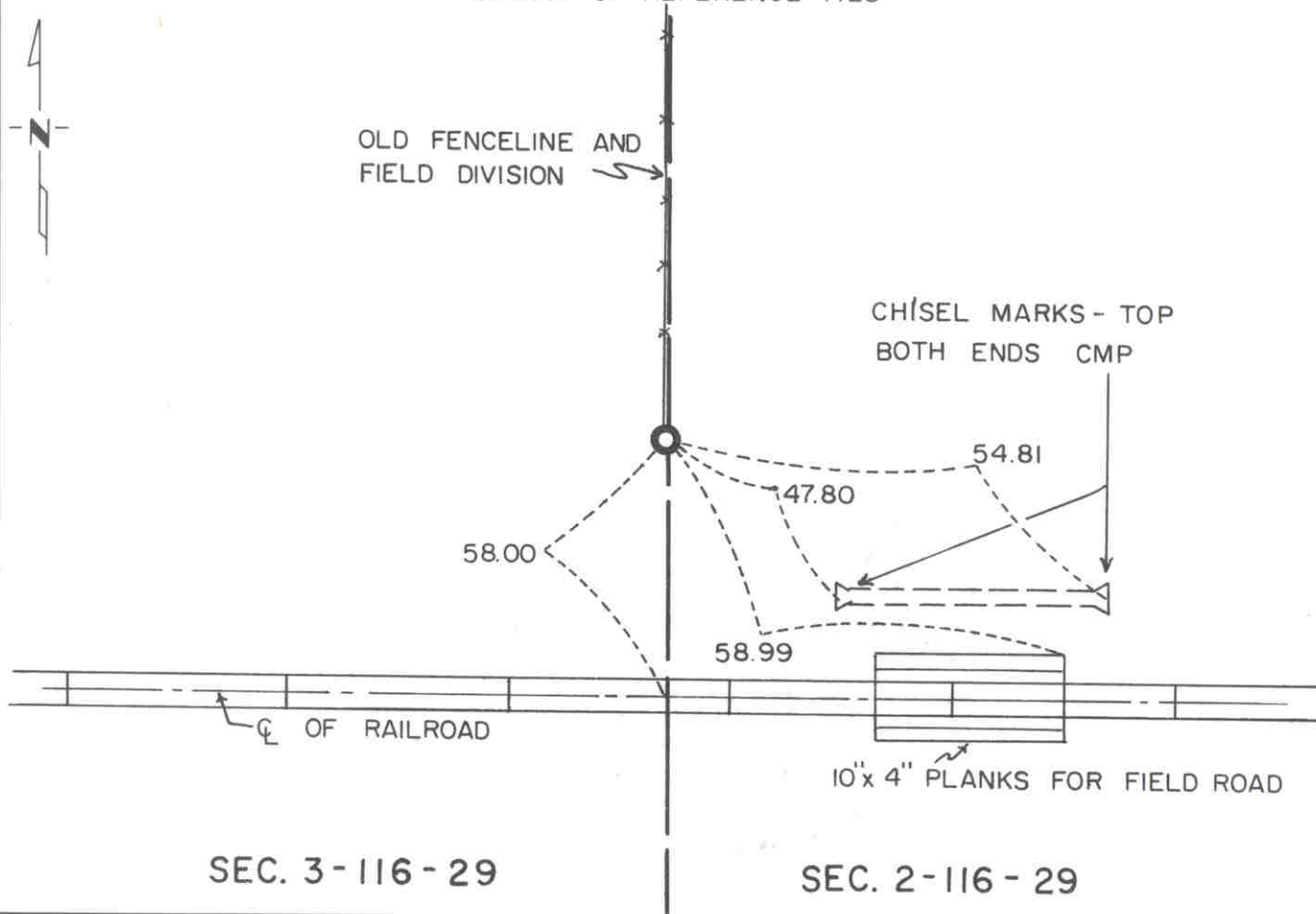
EAST QUARTER Corner of Section 3, Township 116 N, Range 29 W, 5th P.M.

STATE OF MINNESOTA, County of MCLEOD

At the corner location shown on the sketch:

- On AUG. 5, 1991 found a CAST IRON MONUMENT ABOUT 12" BELOW GROUND
DATE
- left monument as found, lowered monument, removed monument (explain)
- On _____ placed a _____
DATE

SKETCH OF REFERENCE TIES



Statement of evidence relative to this corner location is on back of page.

I hereby certify that this document and the data contained herein was prepared by me or under my direct supervision.

Robert Jones
SIGNATURE

7-22-92
DATE

Registration No. 11864

- Land Surveyor, Professional Engineer
- County Surveyor, County Engineer

OFFICE OF THE COUNTY RECORDER

County of McLeod

I hereby certify that this document was filed in the Co. Recorders office at 9 A. .M. on the 29th day of July A.D., 1992

County Recorder Armenia Stille

By _____, Deputy

DOCUMENT NO. 246737

Statement of Evidence:

East Quarter Corner Section 3, T 116 N, R 29 W

- 1855 - The original Public Land Survey was completed by A. H. Runyon. A wood post was set to mark the corner with reference to two bearing trees.
- 1978 - Dickman Knutson, McLeod County Surveyor, interviewed Mr. Fred Zavoral (63) who has lived in the NW 1/4 of Section 2 all of his life. He stated that the old north/south fence line and a large tree about 300 feet north of the railroad were on the section line. Evidence of the old fence line was found. A 1/2" diameter iron pipe was set on the old fence line and 58 feet north of the centerline of the railroad. The old railroad right of way map shows the corner to be 58 feet north of the centerline. This position fits fence corners about 1/4 mile away within 2 feet.
- 1981 - Willard Pellinen replaced the iron pipe with a cast iron monument.
- 1991 - R. C. Jones, Registered Land Surveyor with Mn/DOT, found the cast iron monument about 1 foot below the ground surface. Four of the six reference ties were recovered. No additional ties were set.

The cast iron monument is accepted as the corner location because it fits testimony of a local resident and the location shown on the railroad right of way map. It is 10.11 feet west and 11.84 feet south of the lost location.

For additional information, contact the Mn/DOT Surveys Section at Willmar, Mn 56201.

CERTIFICATE OF LOCATION OF GOVERNMENT CORNER

NORTHEAST Corner of Section 3, Township 116 N, Range 29 W, 5th P.M.

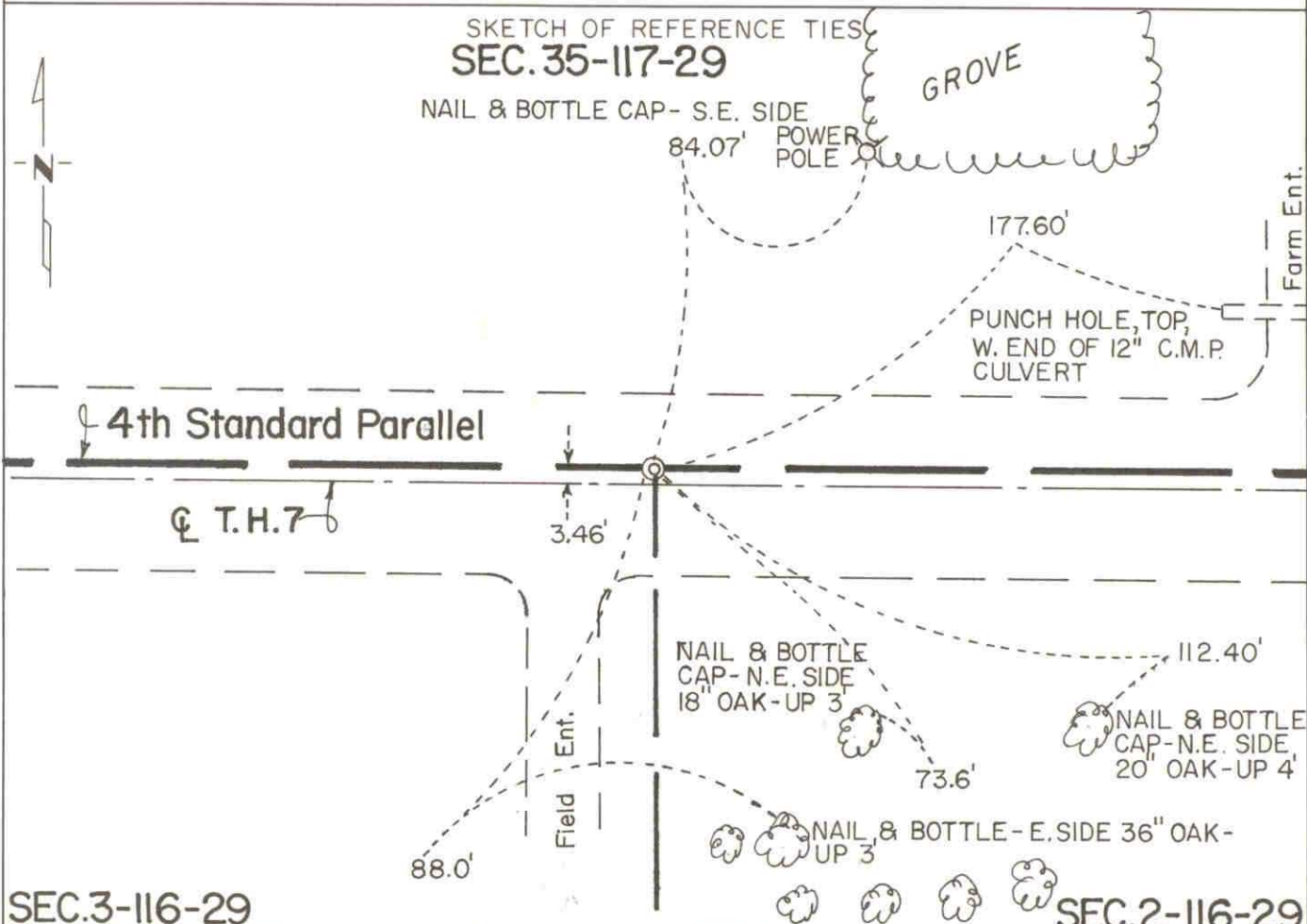
STATE OF MINNESOTA, County of MCLEOD

At the corner location shown on the sketch:

On FEB. 1991 found a NOTHING
DATE

left monument as found, lowered monument, removed monument (explain)

On FEB 1991 placed a P.K. NAIL AT THE ROAD SURFACE ACCORDING TO
DATE THE FOUND REFERENCE TIES



Statement of evidence relative to this corner location is on back of page.

I hereby certify that this document and the data contained herein was prepared by me or under my direct supervision.

Robert Jones
SIGNATURE

7-24-92
DATE

Registration No. 11864

Land Surveyor, Professional Engineer
 County Surveyor, County Engineer

OFFICE OF THE COUNTY RECORDER
County of McLeod

I hereby certify that this document was filed in the Co. Recorders office at 9 A. .M. on the 29th day of July A.D., 1992

County Recorder Charman Ostlie

By _____, Deputy

DOCUMENT NO. 246735

- 1855 - The original Public Land Survey was completed by A. H. Runyon. A wood post was set to mark the closing corner with reference to two bearing trees.
- 1937 - The Minnesota Highway Department right of way map shows the corner to be at T.H. 7 P.O.T. 199+58.1. It was located at the centerline of the existing east/west road and in line with a fence line to the south.
- 1938 - All evidence of the corner was probably destroyed when T.H. 7 was graded.
- 1970 - Dickman Knutson, McLeod County Surveyor, set a spike at the lost location by prorating measured government distances.
- 1971 - Dickman Knutson set a railroad spike at the above location and set reference ties.
- 1989 - Willard Pellinen, McLeod County Surveyor, found the railroad spike about 6" below the road surface and set additional reference ties.
- 1991 - A Mn/DOT survey crew (Gene East crew chief) did not find the railroad spike but did recover the four reference ties set in 1989. A P.K. nail was set at the highway surface according to the four ties. It is located 3.46 feet north of T.H. 7 P.O.T. 199+78.17 and it is on the Fourth Standard Parallel.

The P.K. nail is accepted as the corner location because it is 795.91 ft. east of the southeast corner of Sec. 34-117-29; whereas, the government notes show that it was 795.3 ft. east. This position confirms Knutson's lost location, it fits a field division to the south, and it appears that at least one property survey is dependent on this location for the corner. It appears that a mistake in stationing was made on the MHD right of way map.

For additional information, contact the Mn/DOT Surveys Section at Willmar, Mn 56201.

CERTIFICATE OF LOCATION OF GOVERNMENT CORNER

NORTH QUARTER Corner of Section 3, Township 116 N, Range 29 W, 5th P.M.

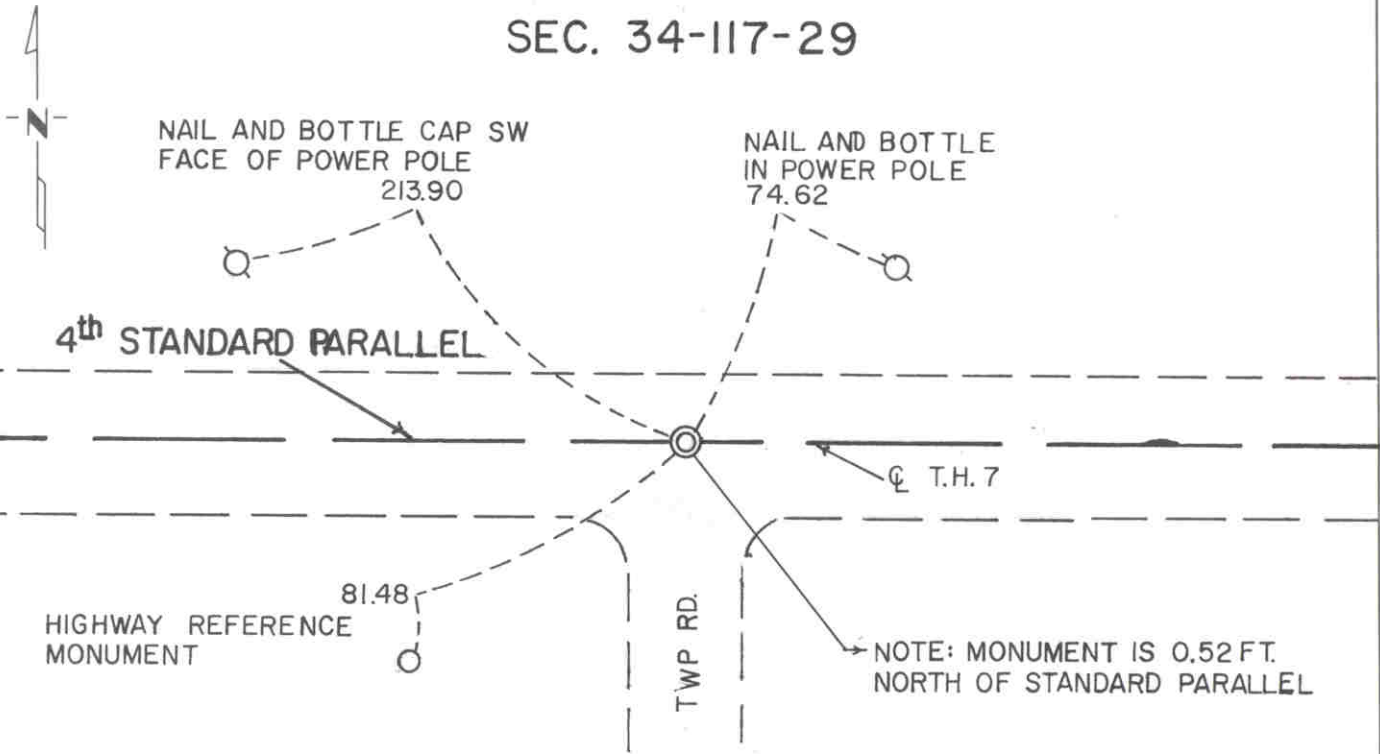
STATE OF MINNESOTA, County of MCLEOD

At the corner location shown on the sketch:

- On FEB, 1991 found a IRON PIN ABOUT 0.2' BELOW THE ROAD SURFACE
DATE
- left monument as found, lowered monument, removed monument (explain)
- On _____ placed a _____
DATE

SKETCH OF REFERENCE TIES

SEC. 34-117-29



SEC. 3-116-29

Statement of evidence relative to this corner location is on back of page.

I hereby certify that this document and the data contained herein was prepared by me or under my direct supervision.

Robert C. Jones
SIGNATURE

7-22-92
DATE

Registration No. 11864

- Land Surveyor, Professional Engineer
- County Surveyor, County Engineer

OFFICE OF THE COUNTY RECORDER

County of McLeod

I hereby certify that this document was filed in the Co. Recorders office at 9 A. .M. on the 29th day of July A.D., 1992

County Recorder Armen Ostlie

By _____, Deputy

DOCUMENT NO. 246738

- 1855 - The original Public Land Survey was completed by A. H. Runyon. The north quarter corners of the sections lying adjacent to and immediately south of a Standard Parallel were not set in the original survey. The acreages shown on the original plat for the fractional quarter sections adjacent to the Standard Parallel indicate that the quarter corner should be located midway between the section corners. This method of establishing the quarter corner is in paragraph 205 on page 212 of the Manual of Surveying Instructions 1947, published by the Department of Interior, Bureau of Land Management.
- 1937 - The Minnesota Highway Department right of way map shows the corner to be at T.H. 7 P.I. 173+33.1. It was located at the centerline of the existing east/west road and on the centerline of a road to the south.
- 1938 - Any monumented evidence of the corner was probably destroyed when T.H. 7 was graded.
- 1978 - Willard Pellinen, McLeod County Surveyor, found an iron pin about 4" below the bituminous surface at the intersection of the centerline of T.H. 7 with the centerline of the road to the south. Reference ties were set.
- 1987 - Willard Pellinen measured the north line of Section 3 and found that the iron pin was within 2 feet of being midway between the section corners. He also found that it was 0.65 feet north of the Fourth Standard Parallel.
- 1989 - Willard Pellinen recovered the iron pin and the reference ties.
- 1991 - A Mn/DOT survey crew (Gene East crew chief) found the iron pin about 0.2 feet below the road surface. It is located 0.10 feet south of T.H. 7 P.O.T. 173+33.1, 2.00 feet east of being midway between the section corners, and 0.52 feet north of the Fourth Standard Parallel.

A point located 0.52 feet south of the iron pin on the Fourth Standard Parallel is accepted as the corner position because it very nearly fits long standing occupation lines and it is only 2 feet from the lost location.

For additional information, contact the Mn/DOT Surveys Section at Willmar, Mn 56201.

CERTIFICATE OF LOCATION OF GOVERNMENT CORNER

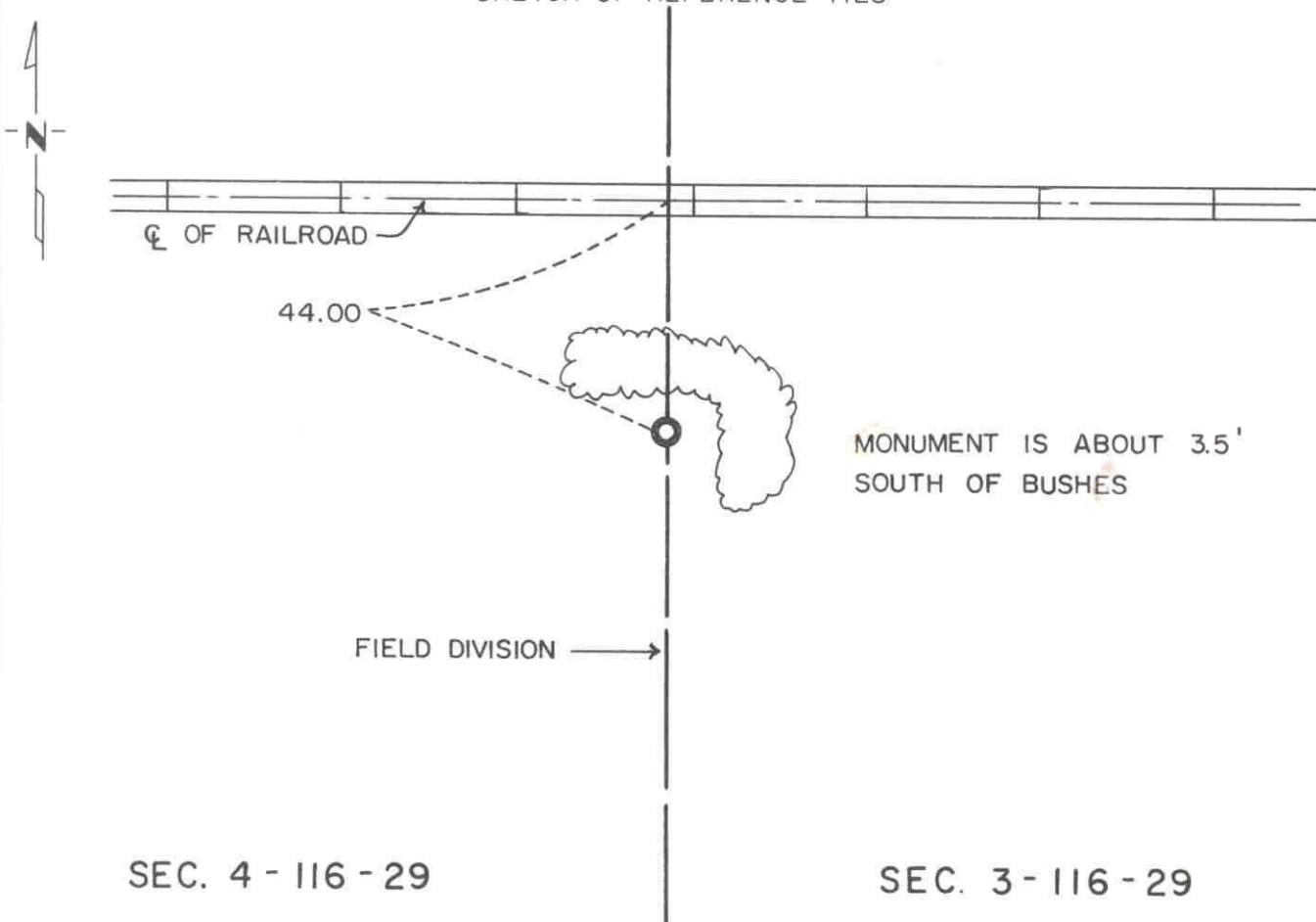
EAST QUARTER Corner of Section 4, Township 116N, Range 29 W, 5th P.M.

STATE OF MINNESOTA, County of MCLEOD

At the corner location shown on the sketch:

- On AUG. 5, 1991 found a CAST IRON MONUMENT PROJECTING ABOUT
DATE 12" ABOVE THE GROUND
- left monument as found, lowered monument, removed monument (explain)
- On _____ placed a _____
DATE

SKETCH OF REFERENCE TIES



Statement of evidence relative to this corner location is on back of page.

I hereby certify that this document and the data contained herein was prepared by me or under my direct supervision.

Robert Jones
SIGNATURE

7-22-92
DATE

Registration No. 11864

- Land Surveyor, Professional Engineer
- County Surveyor, County Engineer

OFFICE OF THE COUNTY RECORDER

County of McLeod

I hereby certify that this document was filed in the Co. Recorders office at 9 A. .M. on the 29th day of July A.D., 1992

County Recorder Armen G. L. L...

By _____, Deputy

DOCUMENT NO. 246740

- 1855 - The original Public Land Survey was completed by A. H. Runyon. A wood post was set above a charred stake in a dirt mound to mark the corner. Trenches and pits were dug as per instructions. Apple seeds were planted at the southeast side of the mound.
- 1978 - Dickman Knutson, McLeod County Surveyor, dug for the corner at a point on a north/south field division which was 44 feet south of the centerline of the railroad. This is the location shown on the railroad right of way map. Many stones were found but none of them appeared to have been set to mark the corner. Local landowners have accepted the field division as the section line over the past many years. An iron pipe was set on the north/south field division a distance of 44 feet south of the centerline of the railroad.
- 1979 - Willard Pellinen, McLeod County Surveyor, replaced the pipe with a cast iron monument.
- 1987 - Willard Pellinen measured the east line of the section and found that the distances to the section corners on either side of this corner fits old survey distances within 0.15 ft. to the north and 1.5 ft. to the south.
- 1991 R. C. Jones, Registered Land Surveyor with Mn/DOT, found the cast iron monument projecting about 1 foot above the ground. It is located on the north/south field division at a distance of 44 feet south of the centerline of the railroad on the southerly side of a clump of bushes.

The cast iron monument is accepted as the corner location because it fits the position shown on the railroad right of way map, it fits the testimony of local residents, and according to Pellinen it fits old survey distances quite well. It is located 15.54 feet west and 7.65 feet south of the lost location.

For additional information, contact the Mn/DOT Surveys Section at Willmar, Mn 56201.

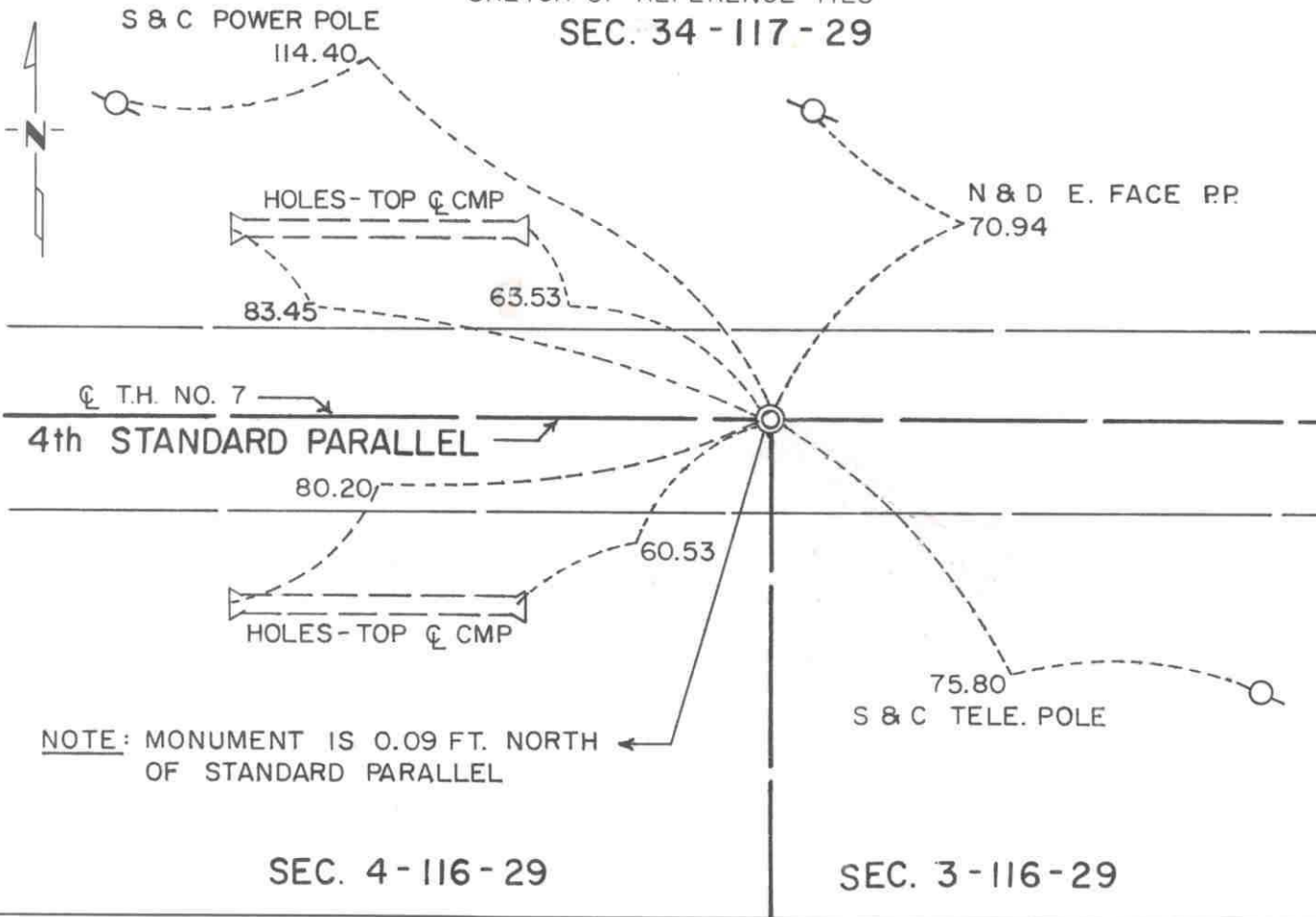
CERTIFICATE OF LOCATION OF GOVERNMENT CORNER

NORTHEAST Corner of Section 4, Township 116N, Range 29W, 5th P.M.
STATE OF MINNESOTA, County of MCLEOD

At the corner location shown on the sketch:

- On FEB. 1991 found a RAILROAD SPIKE AT THE ROAD SURFACE
DATE
- left monument as found, lowered monument, removed monument (explain)
- On _____ placed a _____
DATE

SKETCH OF REFERENCE TIES SEC. 34 - 117 - 29



Statement of evidence relative to this corner location is on back of page.

I hereby certify that this document and the data contained herein was prepared by me or under my direct supervision.

Robert Jones SIGNATURE 7-22-92 DATE

Registration No. 11864
 Land Surveyor, Professional Engineer
 County Surveyor, County Engineer

OFFICE OF THE COUNTY RECORDER
County of McLeod

I hereby certify that this document was filed in the Co. Recorders office at 9 A.M. on the 29th day of July A.D., 1992

County Recorder Carmen Ostlie
By _____, Deputy
DOCUMENT NO. 246739

- 1855 - The original Public Land Survey was completed by A. H. Runyon. A wood post was set above a charred stake in a dirt mound to mark the corner. Trenches and pits were dug as per instructions. Apple seeds were planted at the southeast corner of the mound.
- 1937 - The Minnesota Highway Department right of way map depicted the corner to be at T.H. 7 P.O.T. 146+55 as scaled on the map. It was located at the centerline of the existing east/west road.
- 1938 - All evidence of the corner was probably destroyed when T.H. 7 was graded.
- 1968 - Dickman Knutson, McLeod County Surveyor, found a railroad spike at the centerline of T.H. 7 and set reference ties.
- 1970 - Dickman Knutson reset the railroad spike and set additional ties.
- 1979 - Willard Pellinen, McLeod County Surveyor, reset the railroad spike using the 1970 reference ties.
- 1990 - Willard Pellinen recovered the railroad spike and found that it was within 2.39 ft. of the government distance of 823.68 ft. to the southeast corner of Sec. 33-117-29.
- 1991 - A Mn/DOT survey crew (Gene East, crew chief) found the railroad spike at the road surface. It is located 0.05 feet north of T.H. 7 P.O.T. 146+84.06 and 0.09 feet north of the Fourth Standard Parallel. It is 826.01 feet east of the southeast corner of Sec. 33-117-29.

The railroad spike is accepted as the location of the closing corner because it nearly fits the government distance from the southeast corner of said Sec. 33 and it is nearly at the centerline of T.H. 7. The actual corner is 0.09 feet south of the railroad spike on the Fourth Standard Parallel.

For additional information, contact the Mn/DOT Surveys Section at Willmar, Mn 56201.

CERTIFICATE OF LOCATION OF GOVERNMENT CORNER

NORTH QUARTER Corner of Section 4, Township 116 N, Range 29 W, 5th P.M.

STATE OF MINNESOTA, County of MCLEOD

At the corner location shown on the sketch:

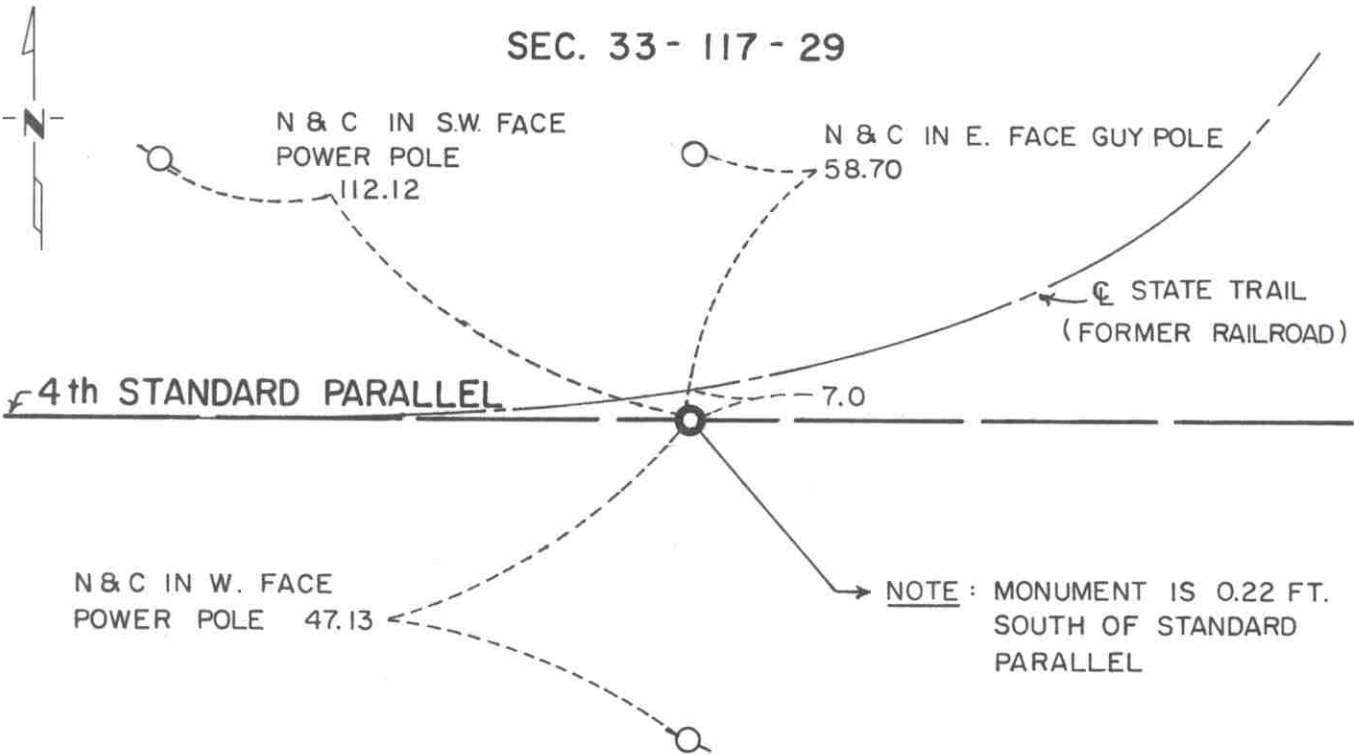
On FEB. 1991 found a CAST IRON MONUMENT ABOUT 3" BELOW SURFACE
DATE

left monument as found, lowered monument, removed monument (explain)

On _____ placed a _____
DATE

SKETCH OF REFERENCE TIES

SEC. 33 - 117 - 29



SEC. 4 - 116 - 29

Statement of evidence relative to this corner location is on back of page.

I hereby certify that this document and the data contained herein was prepared by me or under my direct supervision.

Robert Jones 7-22-92
SIGNATURE DATE

Registration No. 11864

- Land Surveyor, Professional Engineer
- County Surveyor, County Engineer

OFFICE OF THE COUNTY RECORDER

County of McLeod

I hereby certify that this document was filed in the Co. Recorders office at 9 A. .M. on the 29th day of July A.D., 1992

County Recorder Armenia Estlie

By _____, Deputy

DOCUMENT NO. 246741

- 1855 - The original Public Land Survey was completed by A. H. Runyon. The north quarter corners of the sections lying adjacent to and immediately south of a Standard Parallel were not set in the original survey. The acreages shown on the original plat for the fractional quarter sections adjacent to the Standard Parallel indicate that the quarter corner should be located midway between the section corners. This method of establishing the quarter corner is in paragraph 205 on page 212 of the Manual of Surveying Instructions 1947, published by the Department of Interior, Bureau of Land Management.
- 1937 - The Minnesota Highway Department right of way map depicts the corner to be near the centerline of the Minnesota Western Railroad, probably a few feet south. It is about 1077 feet southwesterly of T.H. 7 P.O.T. 123+70 as measured on the map.
- 1968 - Dickman Knutson, McLeod County Surveyor, found an iron pin, which was located 6.10 feet south of the railroad centerline on the easterly extension of the tangent line and in line with a fence to the south. He set a cast iron monument to replace the iron pin and placed four reference ties.
- 1990 - Willard Pellinen, McLeod County Surveyor, found the cast iron monument about 4" below the ground surface. One of the reference ties had been destroyed.
- 1991 - A Mn/DOT survey crew (Gene East, crew chief) found the cast iron monument about 3" below the ground surface and located as shown in the county surveyor's notes. The railroad has been abandoned and the tracks and ties have been taken up. The old railroad grade remains and is now the Luce Line State Recreational Trail. The cast iron monument is located 1071.23 feet southwesterly of T.H. 7 P.O.T. 123+76.40 and 0.22 feet south of the Fourth Standard Parallel.

A point 0.22 feet north of the cast iron monument on the Fourth Standard Parallel is accepted as the corner location because it very closely fits the position depicted on the highway right of way map, it fits a pole line (formerly also a fence line) to the south, and it is 6.86 feet west of being midway between the section corners.

For additional information, contact the Mn/DOT Surveys Section at Willmar, Mn 56201.

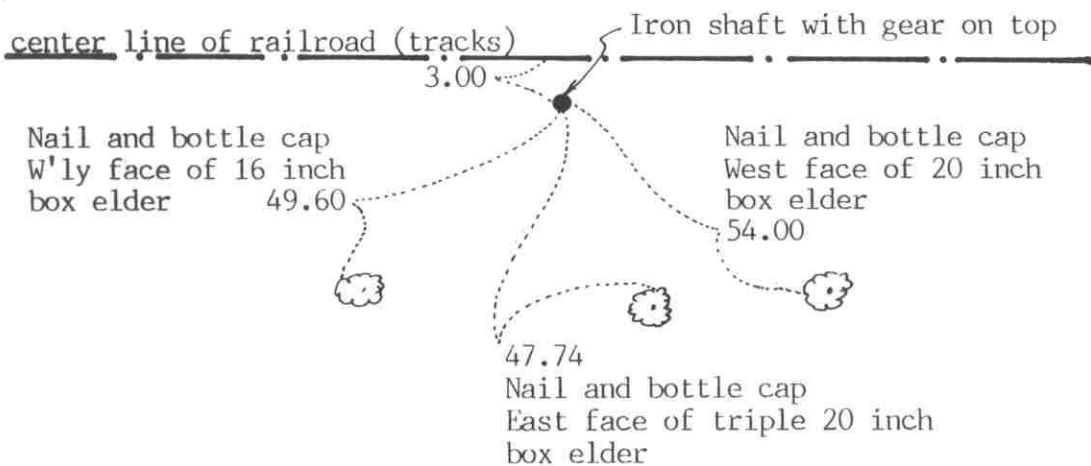
Certificate of Location of Government Corner



SKETCH OF REFERENCE TIES
(NO SCALE)

SECTION 5

SECTION 4



Statement of evidence relative to this corner location on sheet 2

I hereby certify that this document was prepared by me or under my direct supervision.

Willard Pellinen
Willard Pellinen
McLeod County Surveyor
License No. 9626

Date October 5, 1991

OFFICE OF THE COUNTY RECORDER
MCLEOD COUNTY, MINNESOTA.

I hereby certify that this document was filed in this office at 1 o'clock P.M. on the 24 day of Oct, 1991.

Carmen Ostlie County Recorder

By _____, Deputy

Document No. 241596

EAST QUARTER corner, Section 5, Township 116 North, Range 29 West

Certificate of Location of Government Corner

August, 1855. This corner was originally established by A.H. Runyon. He "set quarter section post, drove charred stake, raised mound with trench as per instructions." He planted apple seeds at the southeast side of the mound.

1967. McCombs Knutson Associates (Dickman Knutson, county surveyor) set an iron pipe 3 feet south of the center line of the railroad tracks as per the railroad right of way map. This was in line with an old fence to the north as per testimony by Mr. Benjamin, 80 years old plus, a long time resident.

July 30, 1971. Knutson replaced the iron pipe with a McLeod County cast iron monument and took reference ties.

May 23, 1978. All the old ties had been destroyed. We took new reference ties.

October 9, 1981. Cast iron monument had been destroyed by railroad construction. We set an iron pipe using old ties.

August 13, 1985. We replaced the iron pipe with a McLeod County cast iron monument.

July 2, 1990. We found the cast iron monument in good condition and checked the reference ties.

August 6, 1991. The monument again had been destroyed by railroad construction. We set a 1 inch diameter iron shaft with a gear on top at the corner. Shaft is 30 inches long. The reference ties were ok.

CERTIFICATE OF LOCATION OF GOVERNMENT CORNER

CLOSING CORNER TO

NORTHEAST

Corner of Section 5, Township 116 N, Range 29 W, 5th P.M.

STATE OF MINNESOTA, County of MC LEOD

At the corner location shown on the sketch:

On FEB. 1991 found a CAST IRON MONUMENT NEAR THE SURFACE
DATE

left monument as found, lowered monument, removed monument (explain)

On _____ placed a _____
DATE

SKETCH OF REFERENCE TIES

SEC. 33-117-29

NOTE: MONUMENT IS 0.64 FT. NORTH
OF STANDARD PARALLEL

4th STANDARD PARALLEL

STATE TRAIL
(FORMER RAILROAD)

N & C IN NW. FACE P.P.
70.22

N & C IN S. FACE P.P.
130.08

N & C IN N. FACE P.P.
250.39

SEC. 5-116-29

SEC. 4-116-29

Statement of evidence relative to this corner location is on back of page.

I hereby certify that this document and the data contained herein was prepared by me or under my direct supervision.

Robert Jones
SIGNATURE

7-22-92
DATE

Registration No. 11864

Land Surveyor, Professional Engineer

County Surveyor, County Engineer

OFFICE OF THE COUNTY RECORDER

County of McLeod

I hereby certify that this document was filed in the Co. Recorders office at 9 A. .M. on the 29th day of July A.D., 1992

County Recorder W. M. Estlie

By _____, Deputy

DOCUMENT NO. 246742

- 1855 - The original Public Land Survey was completed by A. H. Runyon. A wood post was set over a charred stake in a dirt mound to mark the corner. Trenches and pits were dug as per instructions. Apple seeds were planted southeast of the mound. It was located 1245 links (821.70 ft.) east of the corner common to Sections 32 and 33, T 117 N, R 29 W.
- 1937 - The Minnesota Highway Department right of way map shows that an iron pipe was found at the corner at or near the centerline of a railroad. It was depicted to be about 1355 feet south of T.H. 7 P.O.T. 90+08 as measured on the map.
- 1979 - Willard Pellinen, McLeod County Surveyor, found an iron pin at the centerline of the railroad. He stated that it was very close to fitting the proration of the government chainage between the southwest corner of Section 33 and the south quarter corner of Section 33 of T 117 N, R 29 W. Reference ties were set.
- 1979 - Willard Pellinen reset the corner from the reference ties. The corner was destroyed when the railroad tracks and ties were taken up. A cast iron monument was set at the centerline of the Luce Line State Recreational Trail.
- 1990 - Willard Pellinen recovered the cast iron monument about 4" below the surface and set new reference ties.
- 1991 - A Mn/DOT survey crew (Gene East, crew chief) found the cast iron monument near the surface. It was at the centerline of the recreational trail. It is located 1352.46 feet southerly of T.H. 7 P.O.T. 90+01.78 and 0.64 feet north of the Fourth Standard Parallel. It is 822.98 ft. east of the southeast corner of Sec. 32-117-29.

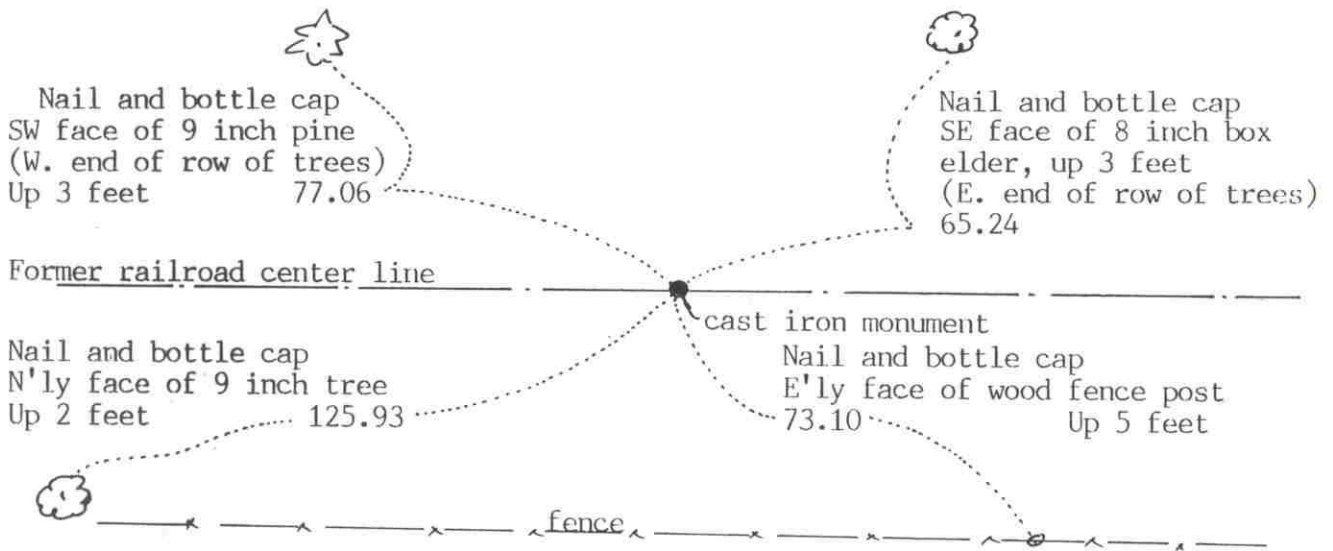
The cast iron monument is accepted as the closing corner. The actual corner is located 0.64 feet south of the cast iron monument on the Fourth Standard Parallel. This location nearly fits the right of way map location, it fits a long standing occupation line; that is, the center of the old railroad grade, and it very closely fits the government distance to the southeast corner of said Section 32.

For additional information, contact the Mn/DOT Surveys Section at Willmar, Mn 56201.

Certificate of Location of Government Corner



SKETCH OF REFERENCE TIES
(NO SCALE)



Statement of evidence relative to this corner location on sheet 2

I hereby certify that this document was prepared by me or under my direct supervision.

Willard Pellinen
Willard Pellinen
McLeod County Surveyor
License No. 9626

Date Oct. 4, 1991

OFFICE OF THE COUNTY RECORDER
MCLEOD COUNTY, MINNESOTA.

I hereby certify that this document was filed in this office at 1 o'clock P.M. on the 21st day of Oct, 1991.

Armen Ostlie County Recorder

By _____, Deputy

Document No. 241597

NORTH QUARTER corner, Section 5, Township 116 North, Range 29 West

Certificate of Location of Government Corner

November 21, 1968. McCombs Knutson Associates (Dickman Knutson, county surveyor) found an iron pipe on the center line of the railroad. Straight line between this pipe and the south quarter corner hits occupation lines in Section 5. They also found a $\frac{1}{2}$ inch diam. rerod 6 feet west. The iron pipe found is within 2 feet of being on a split between the section corners. Knutson set a C.I.M.

May 24, 1979. We found the top of the monument had been broken off but the bottom still good.

October 15, 1983. We checked the monument for line and found it within 0.2 foot of being on the standard parallel.

July 2, 1990. We found the bottom of the monument still good and checked the reference ties.

We accept the iron pipe found by Knutson as having perpetuated the correct location of the quarter corner.

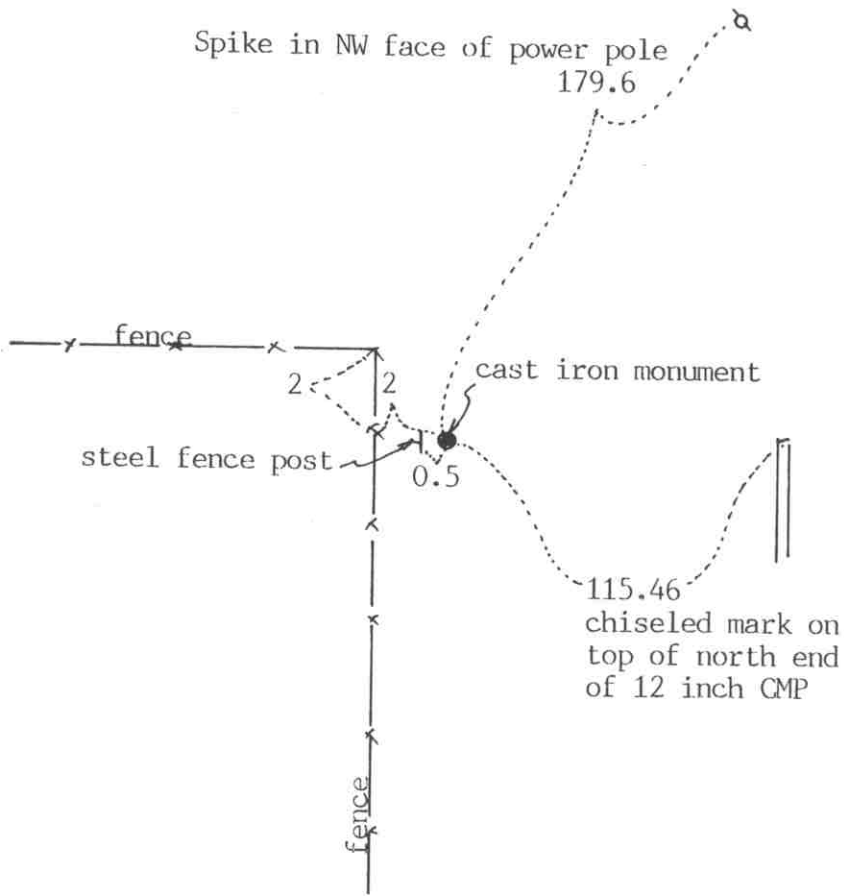
Certificate of Location of Government Corner



SKETCH OF REFERENCE TIES
(NO SCALE)

SECTION 6

SECTION 5



Statement of evidence relative to this corner location on sheet 2

I hereby certify that this document was prepared by me or under my direct supervision.

Willard Pellinen

Willard Pellinen
McLeod County Surveyor
License No. 9626

Date Oct. 5, 1991

OFFICE OF THE COUNTY RECORDER
MCLEOD COUNTY, MINNESOTA.

I hereby certify that this document was filed in this office at 1 o'clock P.M. on the 21st day of Oct, 1991.

Armen Ostlie County Recorder

By _____, Deputy

Document No. 241598

EAST QUARTER corner, Section 6, Township 116 North, Range 29 West

Certificate of Location of Government Corner

August, 1855. A.H. Runyon originally established this corner. He "set quarter section post, drove charred stake, raised mound with trench as per instructions." He also planted apple seeds at the southeast side of the mound.

June 20, 1940. E.L.Higgins measured 5194.3 feet from the east quarter corner of section 6 to the west quarter corner.

July, 1967. McCombs Knutson Associates (Dickman Knutson, county surveyor) found an iron pipe with a McLeod County brass cap at the corner. This was set by Carlisle Madson, Sr., who was county surveyor from 1923 to 1931.

July 30, 1971. Knutson replace the iron pipe with a McLeod County cast iron monument and took reference ties.

September, 1984. We found the monument in good condition and measured to the west quarter corner. We had a distance of 5193.91 feet compared with 5194.3 in 1940.

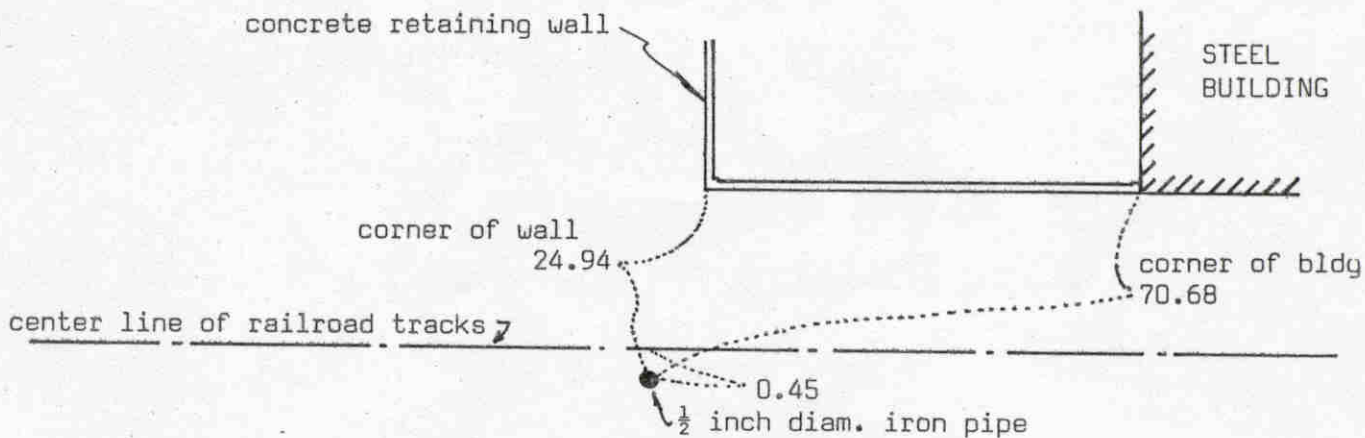
July 2, 1990. We found the monument ok and checked the reference ties.

We accept the pipe found by Knutson as having perpetuated the correct location of the quarter corner.

Certificate of Location of Government Corner



SKETCH OF REFERENCE TIES
(NO SCALE)



Statement of evidence relative to this corner location on sheet 2

I hereby certify that this document was prepared by me or under my direct supervision.

Willard Pellinen

Willard Pellinen
McLeod County Surveyor
License No. 9626

Date 4/15/89

OFFICE OF THE COUNTY RECORDER
MCLEOD COUNTY, MINNESOTA.

I hereby certify that this document was filed in this office at 9 o'clock A.M. on the 19th day of May, 1989.

Carmen Ostlie, County Recorder

By _____, Deputy

Document No. 228241

Certificate of Location of Government Corner

This corner was originally set by the government in 1855. A.H.Runyon "set post, drove charred stake, raised mound with trenches as per instructions, and planted apple seeds."

1904 survey notes by E.L.Higgins show an iron monument at the corner.

In 1916, Higgins found reference points for the corner and set a 1 inch diameter iron pin at the corner.

In 1968, McCombs Knutson Associates (Dickman Knutson, county surveyor) found a 1 inch diameter iron pin at the corner, about 1 foot north of the center line of the railroad tracks. They set a McLeod County cast iron monument in place of the iron pin and took reference ties. This corner was $1\frac{1}{2}$ feet north of the standard parallel.

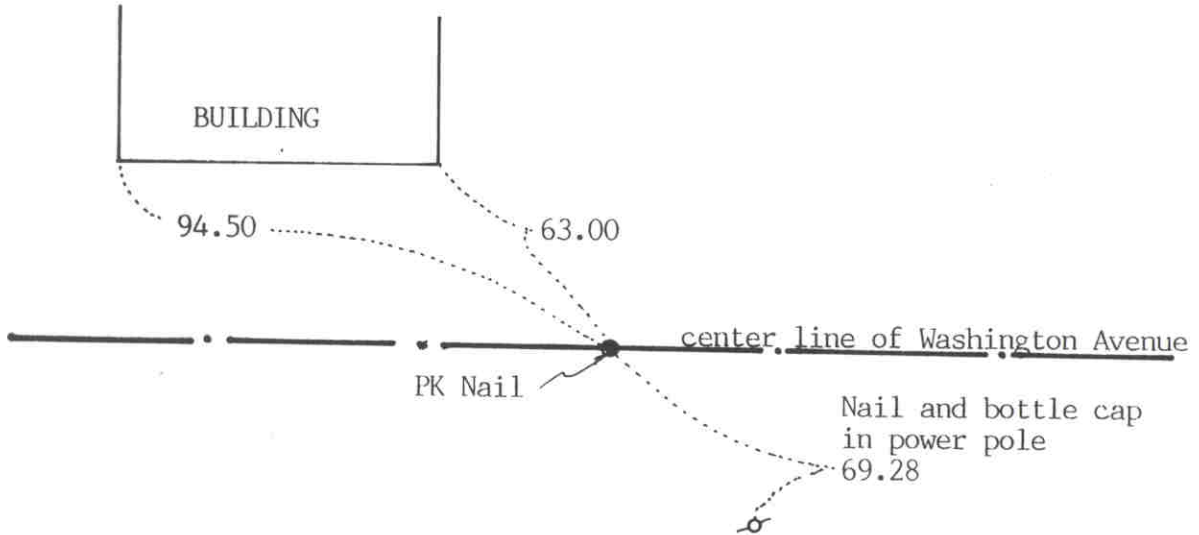
On February 13, 1989, we found the cast iron monument destroyed by construction on the railroad. We set an iron pipe at our measured distance from the southwest corner of Section 32, T117, R29. (836.60 feet) We set the iron pipe on the standard parallel, about $1\frac{1}{2}$ feet north of the old corner.

The location of this corner has been perpetuated by the iron pin set by Higgins and later by the cast iron monument set by Knutson and by our distance from the southwest corner of Section 32.

Certificate of Location of Government Corner



SKETCH OF REFERENCE TIES
(NO SCALE)



Statement of evidence relative to this corner location on sheet 2

I hereby certify that this document was prepared by me or under my direct supervision.

Willard Pellinen

Willard Pellinen
McLeod County Surveyor
License No. 9626

Date OCT. 4, 1991

OFFICE OF THE COUNTY RECORDER
MCLEOD COUNTY, MINNESOTA.

I hereby certify that this document was filed in this office at 1 o'clock P.M. on the 21st day of Oct, 1991.

Armen Botchie, County Recorder

By _____, Deputy

Document No. 241599

NORTH QUARTER corner, Section 6, Township 116 North, Range 29 West

Certificate of Location of Government Corner

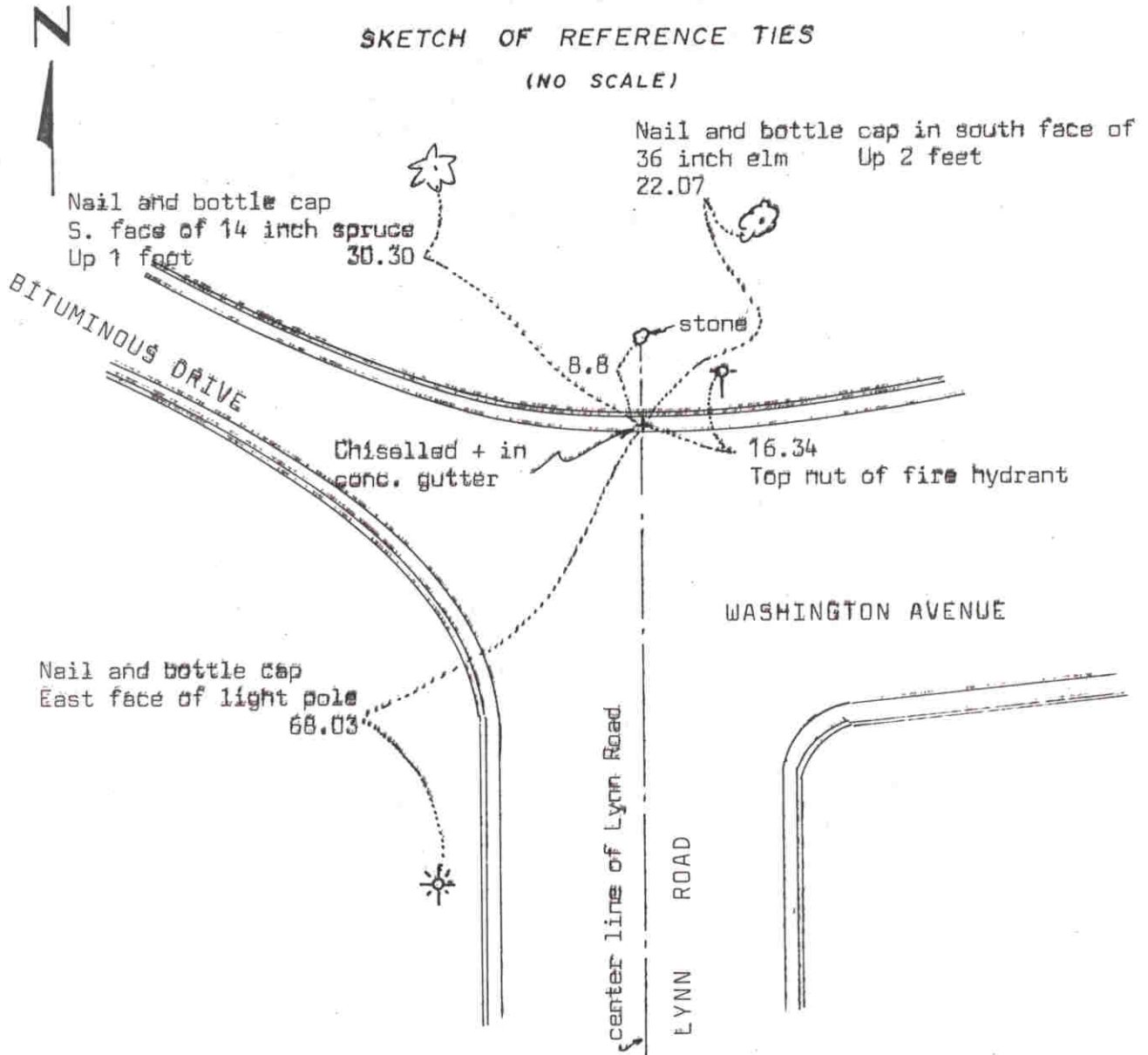
This corner was set on a proration of government distances between the northeast and northwest corners of Section 6, and on the standard parallel, by Dickman Knutson, county surveyor.

The government distance for the west half was 36.69 chains and 40 chains for the east half.

We have a distance of 2450.27 for the west half and 2671.32 feet for the east half. This is 28.73 feet longer for the west half than the government had and 31.32 feet longer for the east half.

Certificate of Location of Government Corner

SKETCH OF REFERENCE TIES (NO SCALE)



Statement of evidence relative to this corner location on sheet 2

I hereby certify that this document was prepared by me or under my direct supervision.

Willard Pellinen
Willard Pellinen
McLeod County Surveyor
License No. 9626

Date 7/25/89

OFFICE OF THE COUNTY RECORDER
MCLEOD COUNTY, MINNESOTA.

I hereby certify that this document was filed in this office at 2 o'clock P.M. on the 27th day of July, 1989.

Garman Ostlie, County Recorder
By _____, Deputy

Document No. 229182

NORTHEAST corner, Section 1, Township 116 North, Range 30 West

Certificate of Location of Government Corner

This corner was originally established by the government in 1855. John Ryan set a post and had reference ties to 2 bearing trees.

September 1934 survey notes show a stone at this corner with reference ties.

Lew Merrill, county surveyor from 1943 to 1955 said there is a stone at the corner, but didn't know if it was on the standard parallel.

June 3, 1970. McCombs Knutson Associates (Dickman Knutson, county surveyor) found the stone and set a chiselled + on the concrete gutter, on the standard parallel, 8.8 feet south of the stone. They set the + on the east line of the Northeast Quarter of Section 6, which also is the center line of Lynn Road.

February 24, 1989. We found the + in the concrete gutter and took new reference ties.

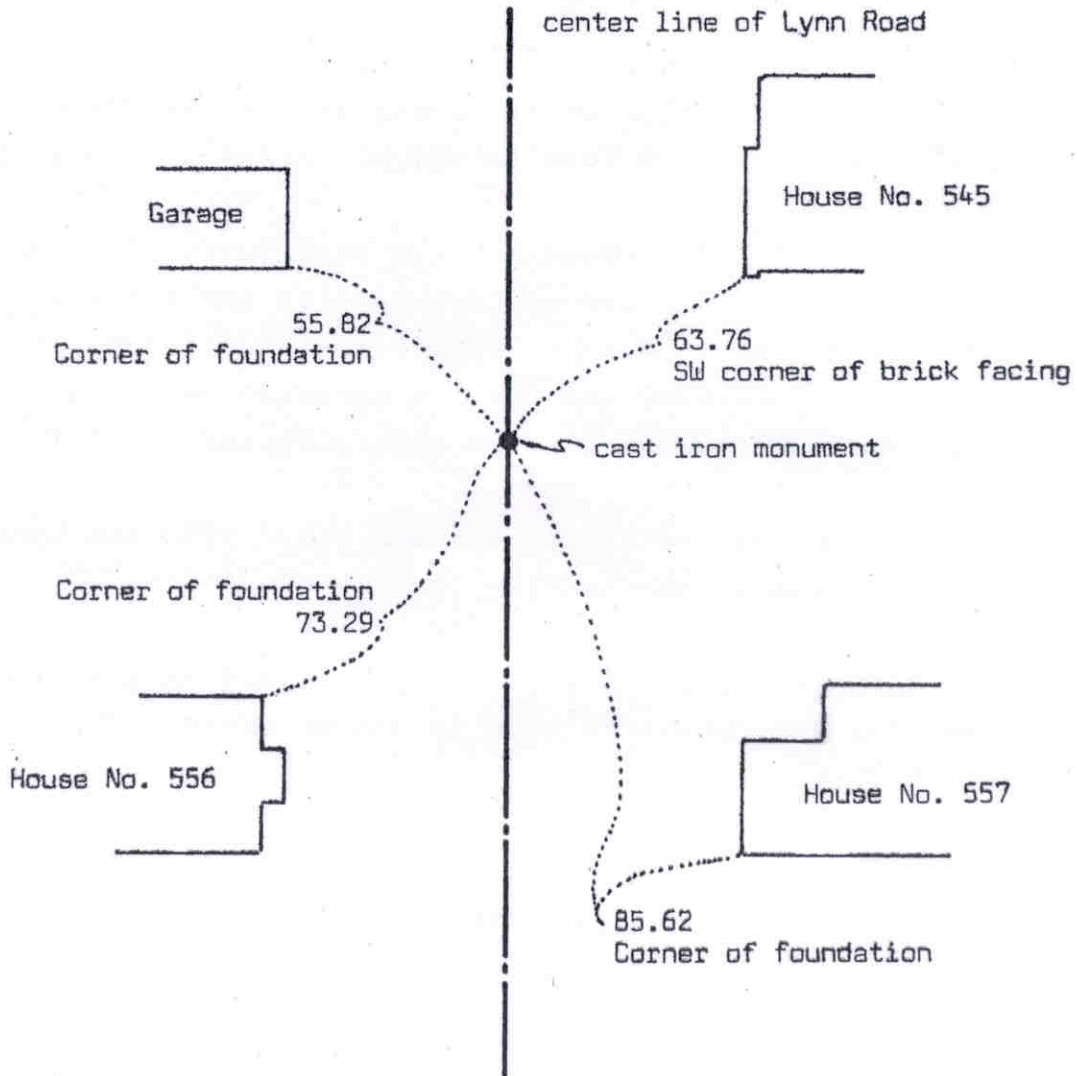
We believe the stone has perpetuated the northeast corner location as set by the government and the chiselled + in the concrete is the correct location for the corner.

Certificate of Location of Government Corner



SKETCH OF REFERENCE TIES

(NO SCALE)



Statement of evidence relative to this corner location on sheet 2

I hereby certify that this document was prepared by me or under my direct supervision.

Willard Pellinen

Willard Pellinen
McLeod County Surveyor
License No. 9626

Date 7/21/89

OFFICE OF THE COUNTY RECORDER
MCLEOD COUNTY, MINNESOTA.

I hereby certify that this document was filed in this office at 2 o'clock P.M. on the 27th day of July, 19 89.

Carmin Potlie, County Recorder

By _____, Deputy

Document No. 229183

EAST QUARTER corner, Section 1, Township 116 North, Range 30 West

Certificate of Location of Government Corner

This corner was originally established by the government in 1855. John Ryan set a post and had reference ties to two bearing trees.

1940. E.L.Higgins survey shows a $2\frac{1}{2}$ inch by 3 foot long iron pipe with a 4 inch diameter brass cap at the corner. He had a distance of 2636.75 feet to the southeast corner of Section 1.

December, 1968. McCombs Knutson Associates (Dickman Knutson, County Surveyor) found an iron pipe at the corner. This was not the monument shown on Higgins' survey. The street has been improved since 1940 and the old monument destroyed. Knutson replaced the found iron pipe with a McLeod County cast iron monument. They had a distance of 2637.65 feet to the southeast corner of the section. This point fits the monumentation on each side of the section line fairly well.

February 24, 1989. We found the monument in good condition and took new reference ties to the monument.

We believe the iron pipe found by Knutson was set in the same location as the monument Higgins had and has perpetuated the true location of the quarter corner.